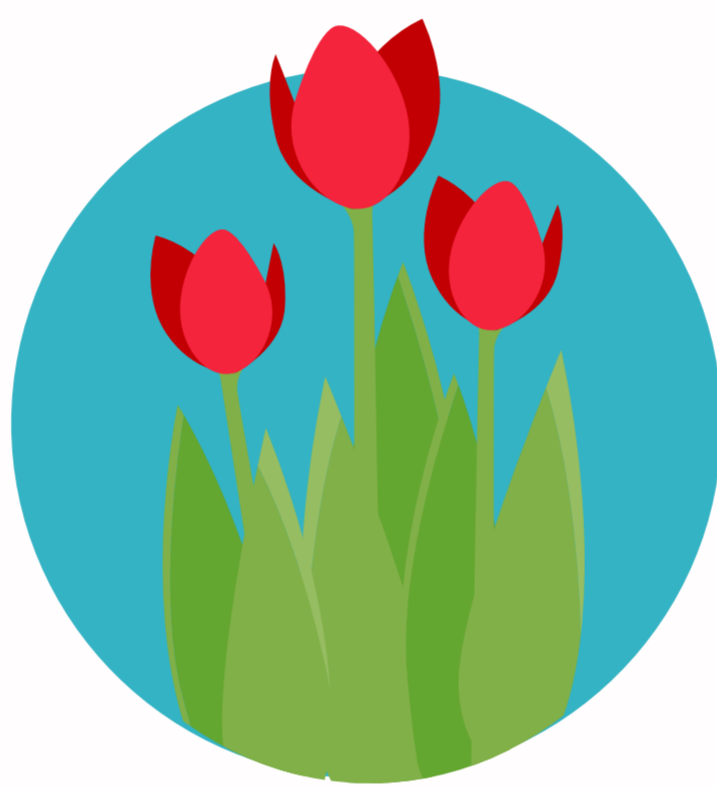


Springtime dangers

what you need to know about toxic plants

Warmer weather and lighter evenings equal more time spent enjoying our gardens, starting with simple weeding and planting. But while many of the plants that we commonly keep are beautiful to look at, these garden favourites can do some serious damage to our pets.



Bulbs of popular flowers such as daffodils can prove deadly if eaten. Other toxic plants, including **tulips**, **snowdrops**, **lily of the valley** and **aconite**, can also cause serious internal problems and sometimes even death.

.....
There are no specific antidotes to these dangerous plant toxins, so if you notice any signs of poisoning (excessive salivation, vomiting, diarrhoea, appearing 'drunk' or even collapsing), contact your vet immediately.

Many of us like bringing these same flowers indoors as bouquets. Lilies are a big unknown danger, carrying pollen so poisonous that it can cause irreversible kidney failure in curious cats.



Just as with people, dogs and cats can develop allergies to plants, pollens, grasses, and many other substances in springtime. However, allergies in pets will appear as itchy skin and ear problems, accompanied by hair loss or inflamed skin.

